

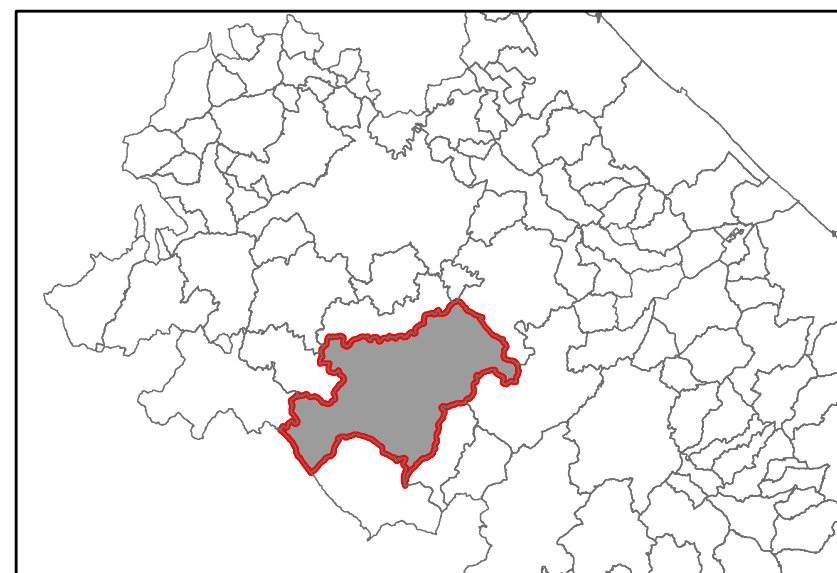


Attuazione della DGR n.942 del 17/06/2024

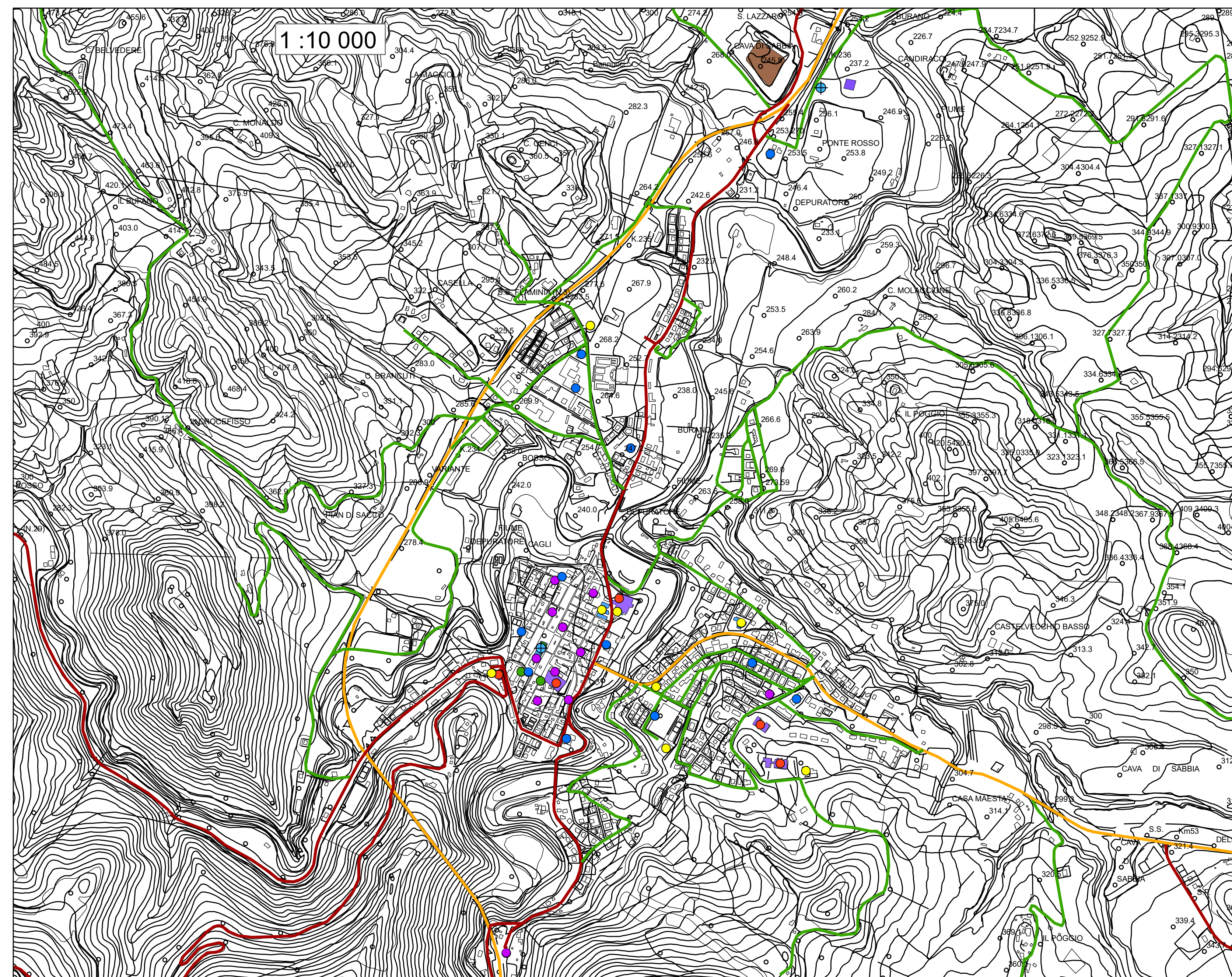
## PIANO COMUNALE DI PROTEZIONE CIVILE Carta degli edifici sensibili

Tav.8 cartografia di dettaglio

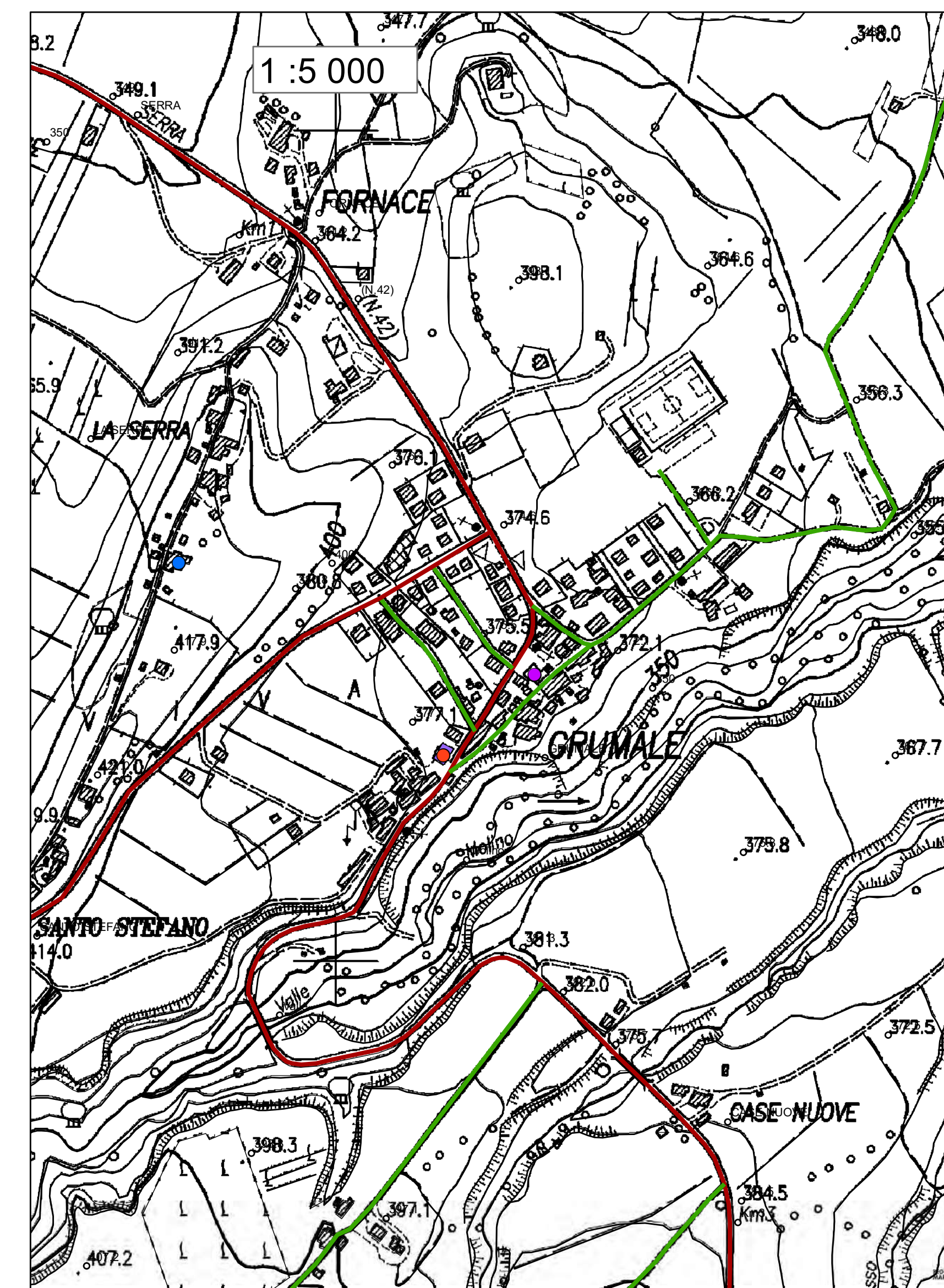
Regione Marche  
Provincia Pesaro-Urbino  
Comune di Cagli



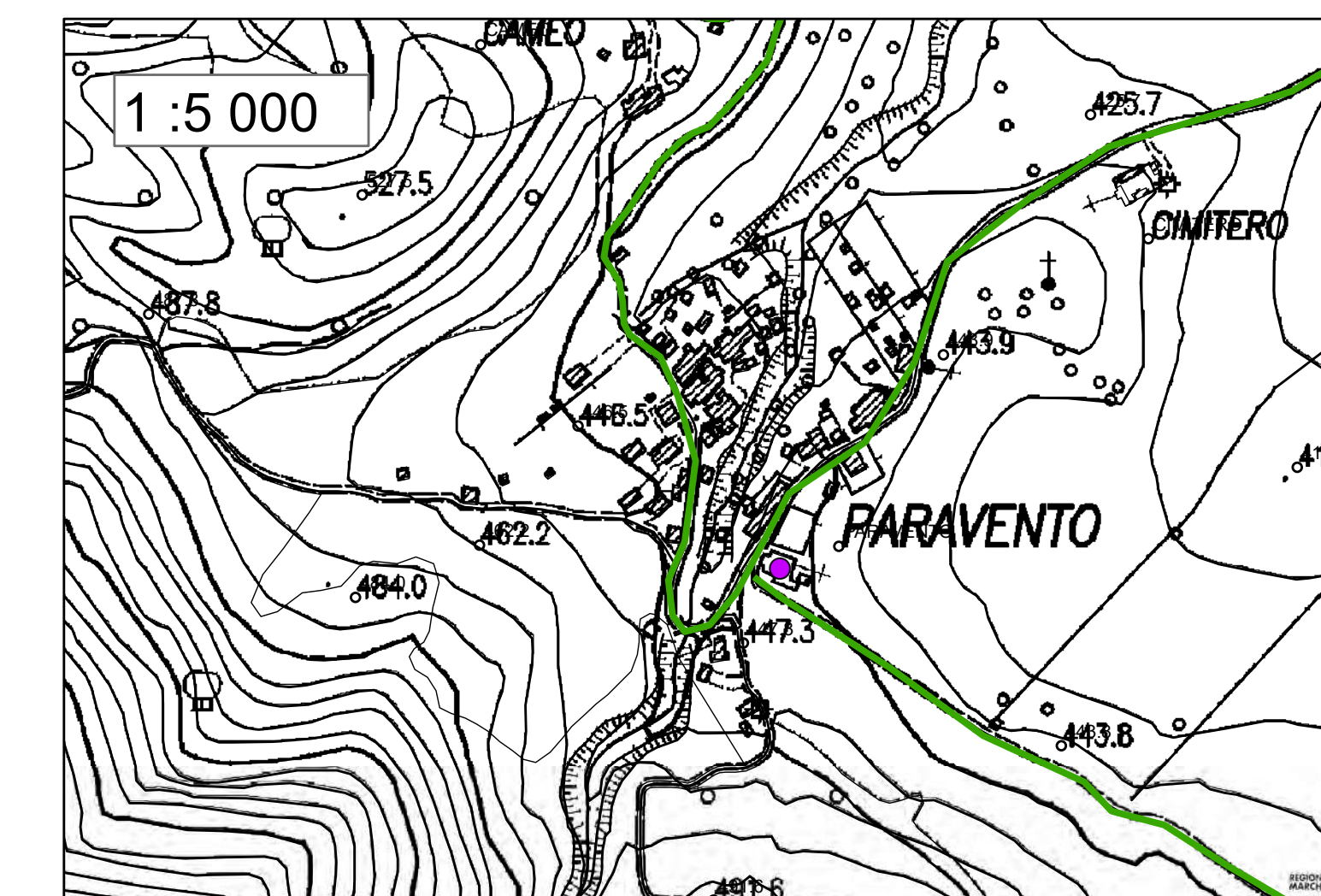
Regione 	Soggetto realizzatore: Geol. Francesco Tassi	Data: Dicembre 2024
-------------	---	------------------------



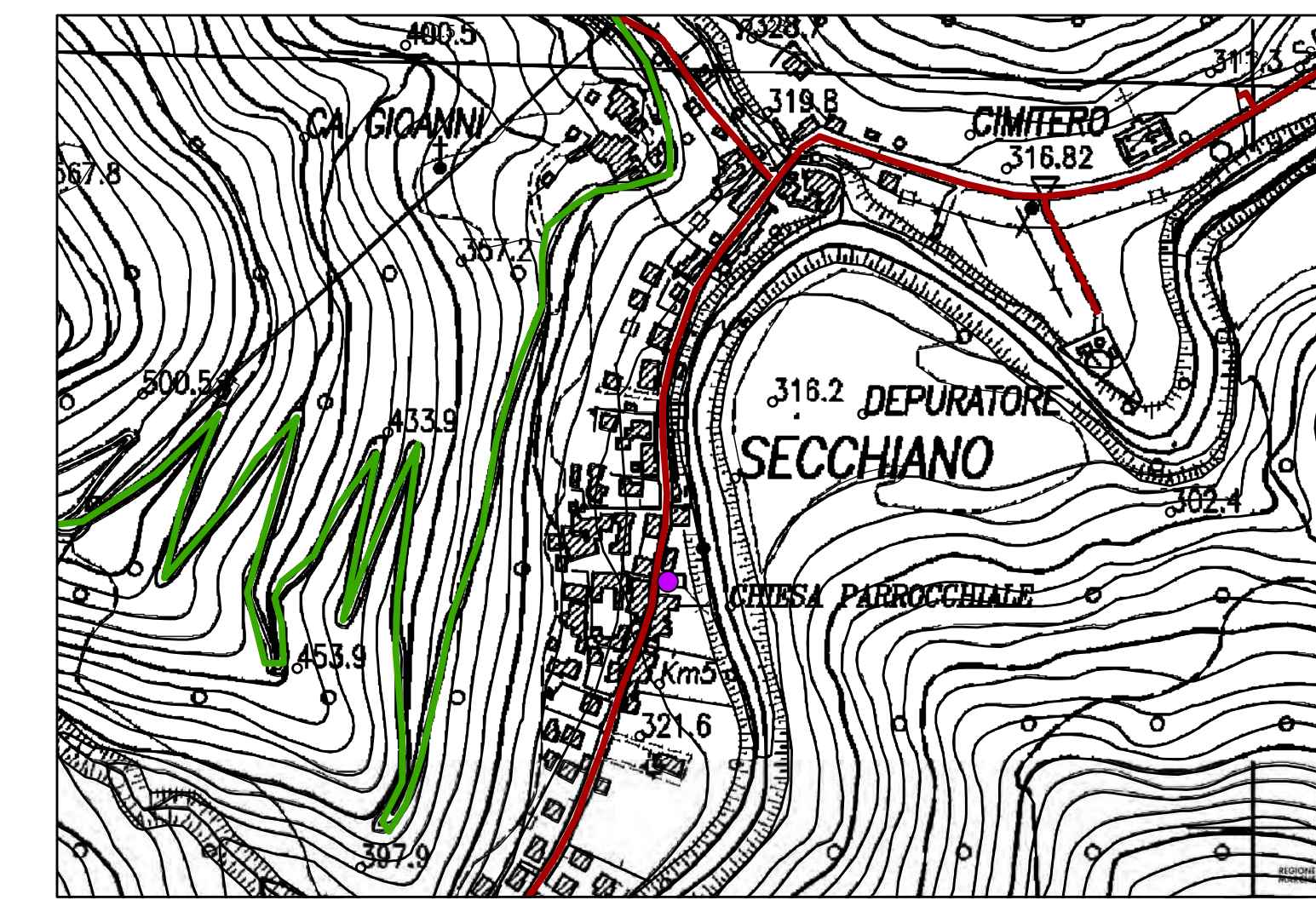
CAGLI



ACQUAVIVA



PARAVENTO



SECCHIANO

### Legenda

#### edifici\_sensibili

- scuole
- Edifici strategici
- Chiese
- Uffici pubblici
- Altri edifici con ammassamenti

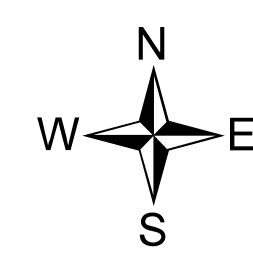
- scuole
- edifici\_strategici

#### Strade

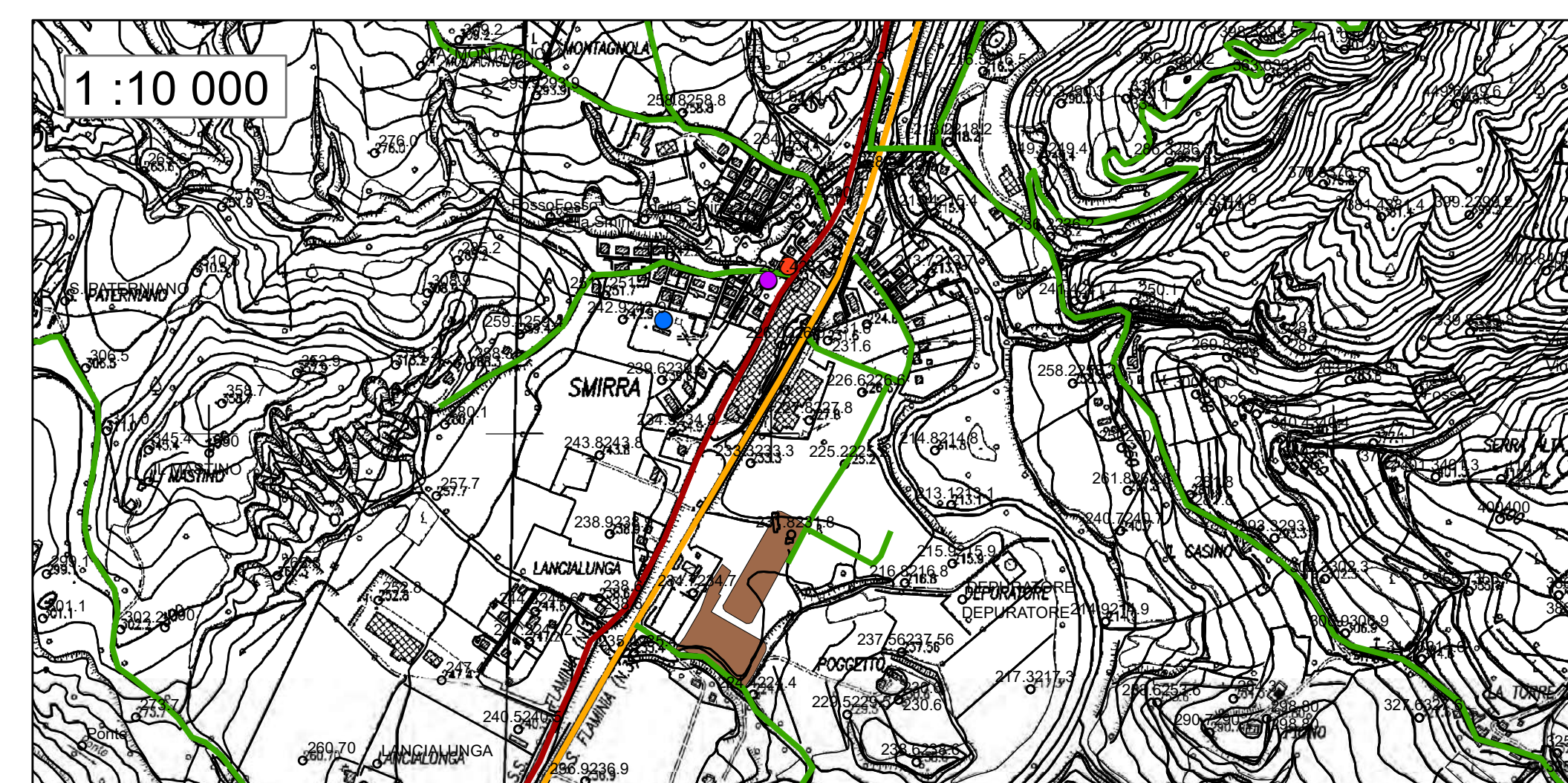
- Comunale
- Nazionale
- Provinciale

#### Aree

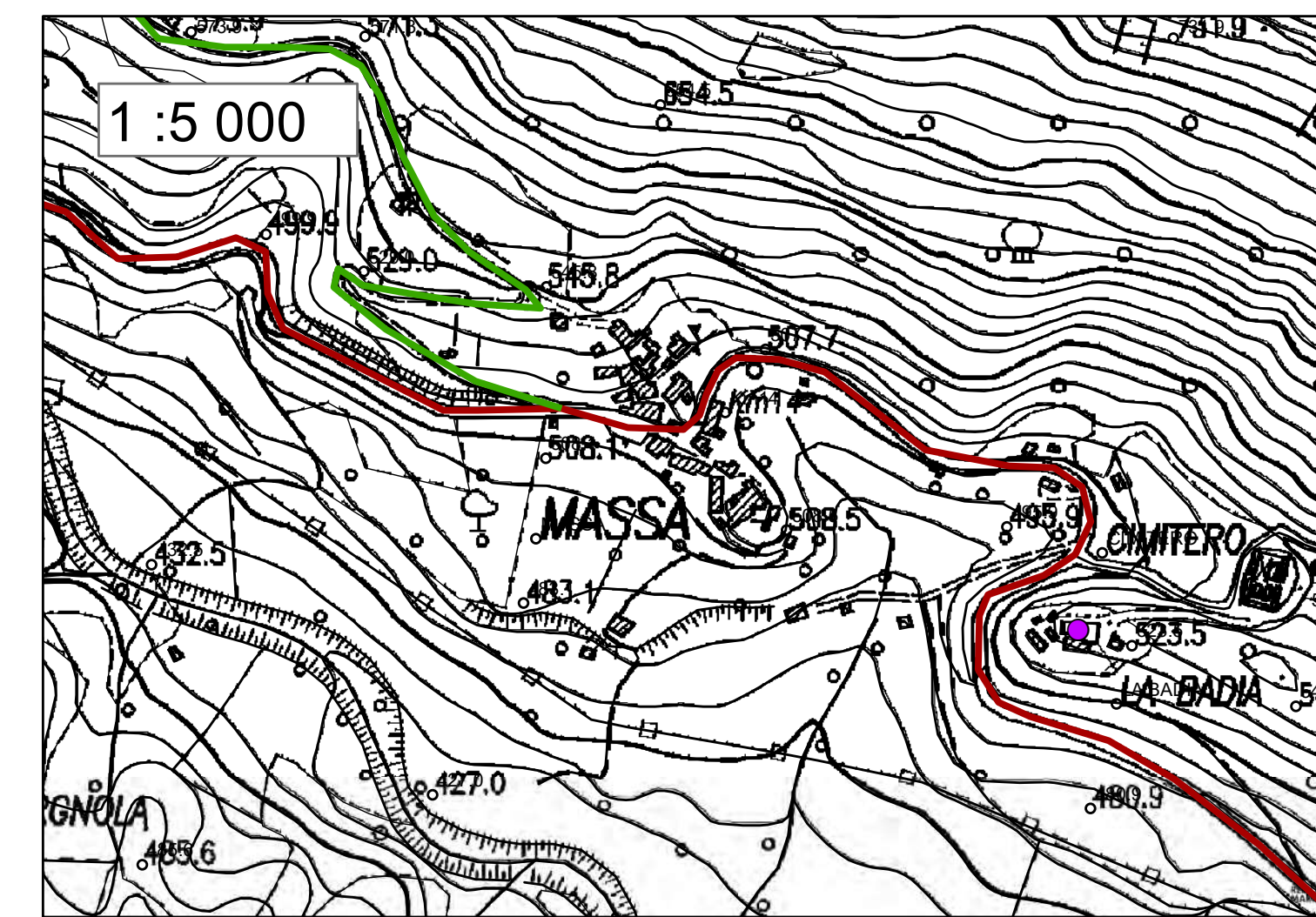
- Macerie
- Eliporto



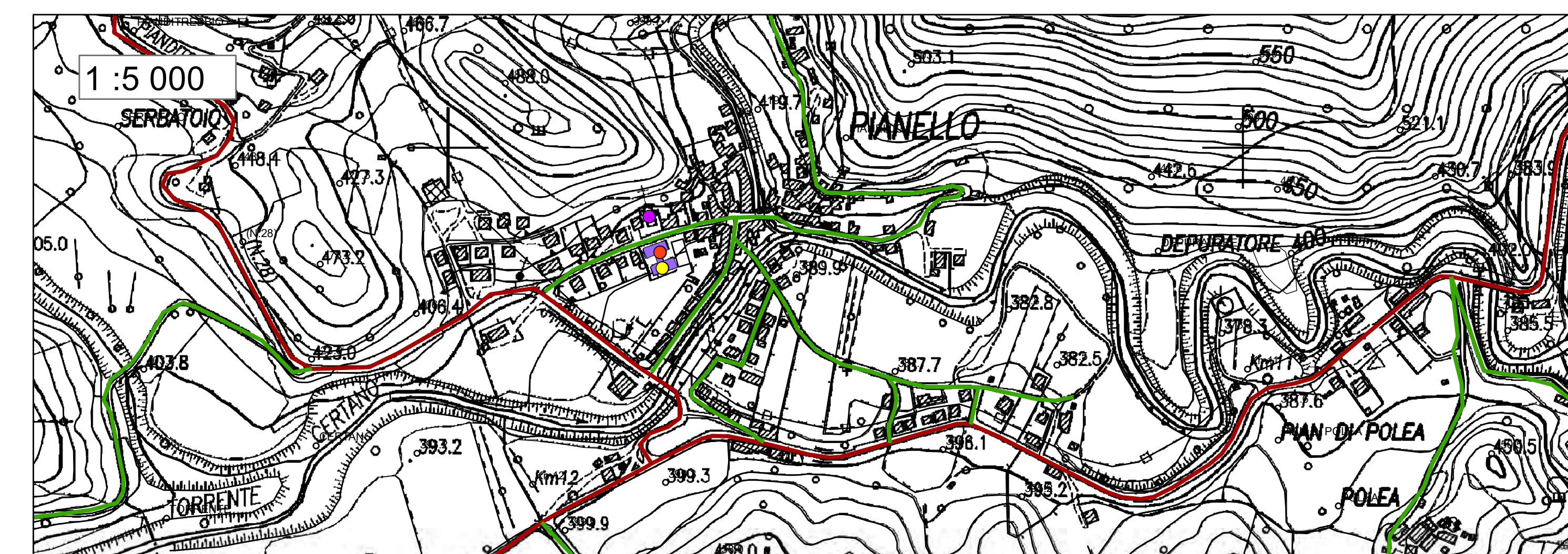
Geographic Coordinate System: WGS84 - UTM33



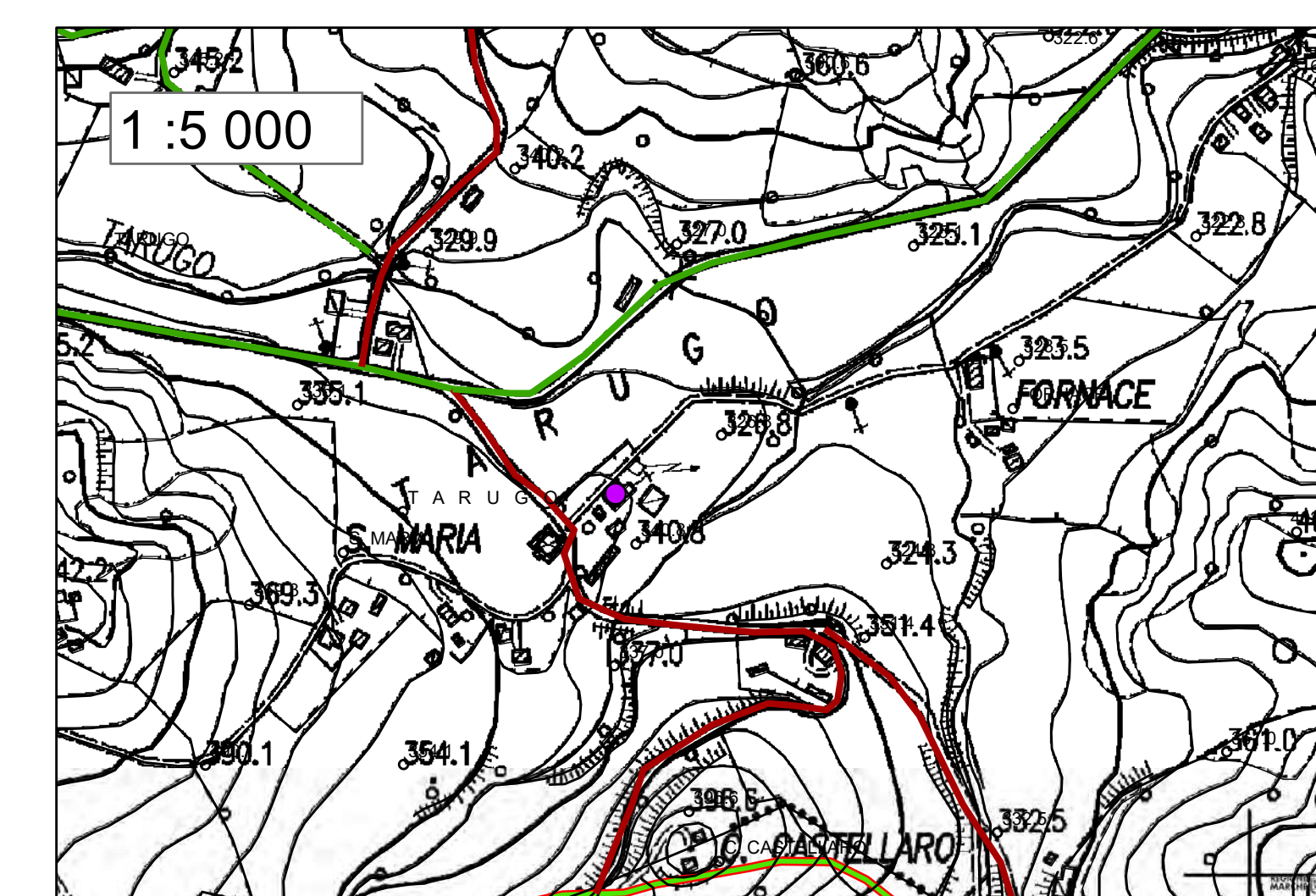
SMIRRA



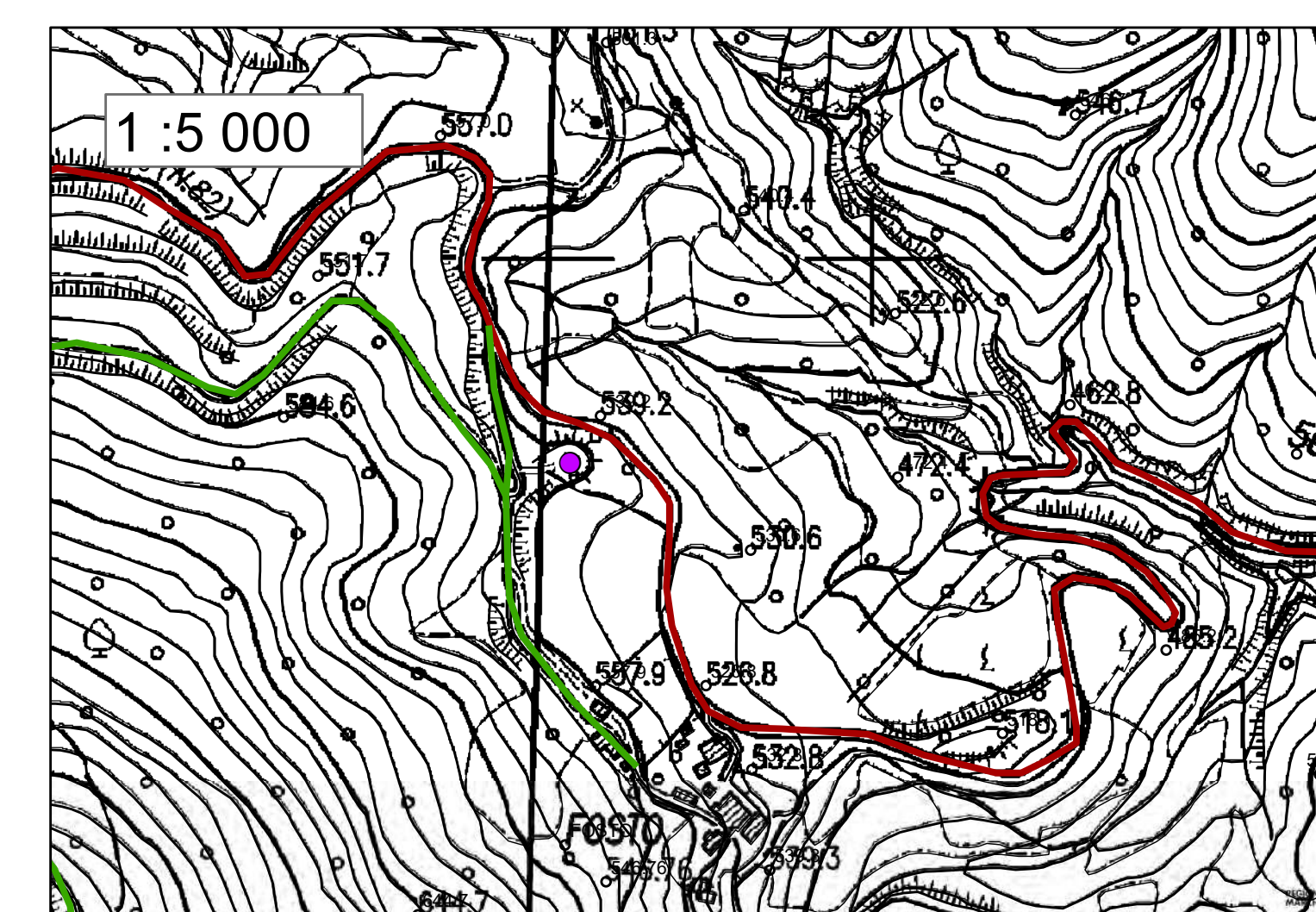
MASSA



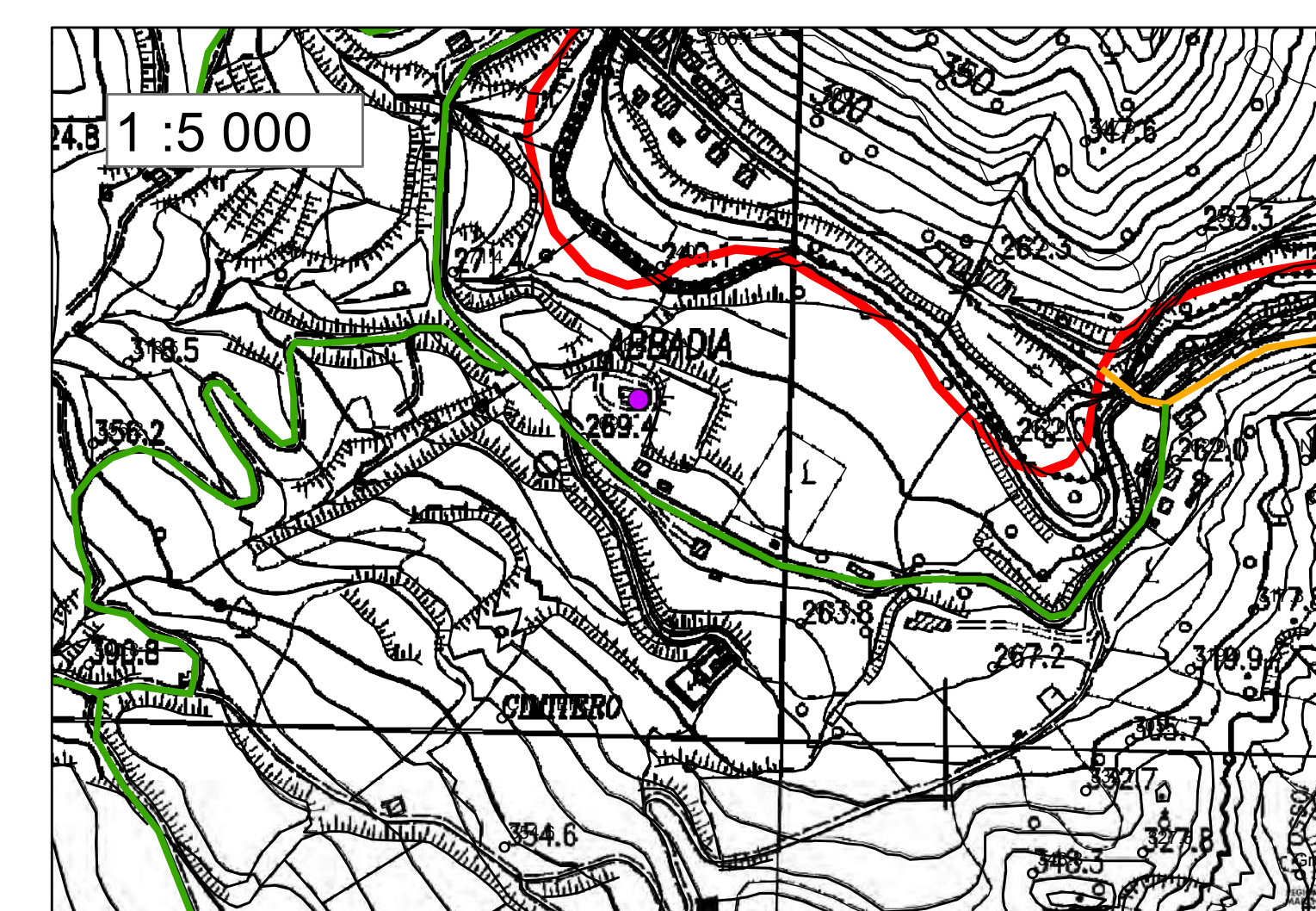
PIANELLO



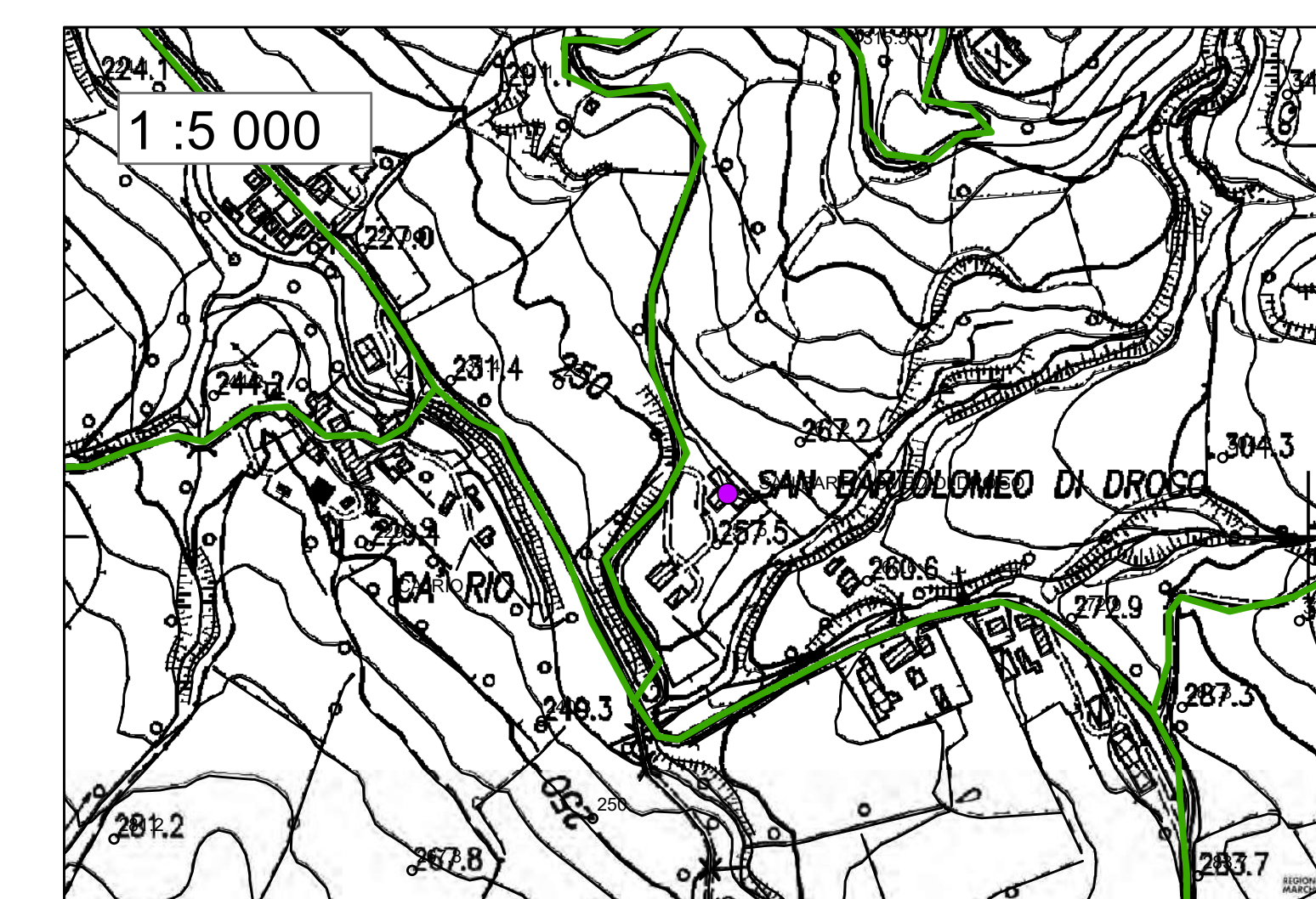
TARUGO



FOSTO



ABBADIA



CARIO

